



Patentamientos por Marcas - Mercado Total

	nov/08(a)	oct/08(b)	nov/07(c)	nov/06(d)	Var a-b	Var a-c	Var a-d	Ac. 08	Ac. 07	Var 08-07
Automovil	26.447	32.740	27.303	22.295	-19,22%	-3,14%	18,62%	440.577	405.258	8,72%
Comercial Liviano	6.014	8.170	7.433	5.554	-26,39%	-19,09%	8,28%	113.620	99.077	14,68%
Comercial Pesado	1.270	1.816	1.677	1.282	-30,07%	-24,27%	-0,94%	22.030	22.066	-0,16%
Otros Pesados	864	1.015	1.088	976	-14,88%	-20,59%	-11,48%	13.730	13.684	0,34%
Total	34.595	43.741	37.501	30.107	-20,91%	-7,75%	14,91%	589.957	540.085	9,23%
Prom. diario	1.730	2.302	1.875	1.505				2.576	2.369	
Dias habiles	20	19	20	20				229	228	

Patentamientos por origen		
	08-Nov	Ac. 08
Importados	0	328.529
Nacionales	0	226.763



■ Importados ■ Nacionales

Patentamientos Mensuales

	ene	feb	mar	abr	may	jun	jul	ago	sep	oct	nov	dic
2008	85.811	46.477	44.277	56.149	56.809	49.082	58.414	51.110	56.197	51.037	34.595	
2007	82.552	38.841	47.379	41.626	47.231	42.139	50.182	54.285	48.857	49.497	40.640	24.528
Var% 08-07	3,95%	19,66%	-6,55%	34,89%	20,28%	16,48%	16,40%	-5,85%	15,02%	3,11%	-14,87%	-100,00%
2006	65.984	32.425	40.400	34.249	38.284	36.567	36.949	39.123	39.643	36.009	33.252	17.725
2005	52.400	26.323	30.558	32.929	33.443	32.556	34.172	31.908	36.126	30.578	29.364	15.968

Patentamientos por Marcas - Totales

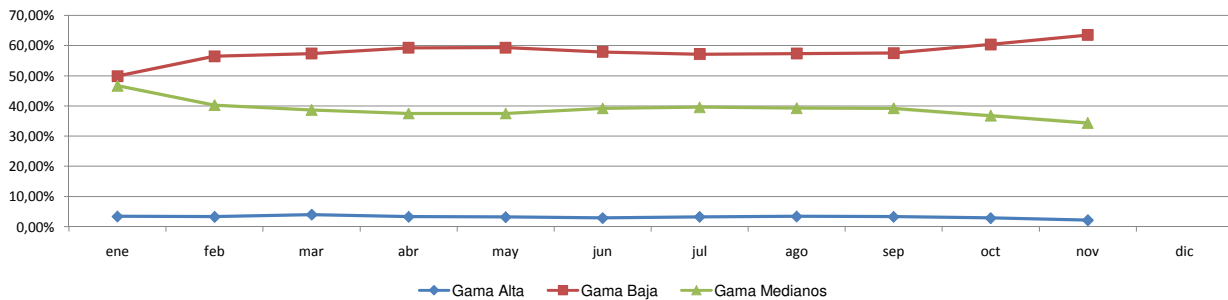
Marca	nov/08(a)		nov/07(c)		oct/08(e)		Var a-c	Var a-e	2008		2007		2008-2007
	Part %	Part %	Part %	Part %	ene - nov	Part %			ene - nov	Part %			
Volkswagen	6.706	19,90%	6.287	17,29%	8.703	20,37%	6,66%	-22,95%	107.694	18,70%	101.143	19,20%	6,48%
Chevrolet	5.287	15,69%	5.208	14,32%	6.106	14,29%	1,52%	-13,41%	82.184	14,27%	78.665	14,93%	4,47%
Ford	4.190	12,43%	5.854	16,10%	5.783	13,54%	-28,43%	-27,55%	71.903	12,49%	72.442	13,75%	-0,74%
Renault	3.983	11,82%	4.175	11,48%	4.042	9,46%	-4,60%	-1,46%	67.158	11,66%	64.130	12,17%	4,72%
Fiat	3.543	10,51%	3.762	10,35%	4.607	10,79%	-5,82%	-23,10%	61.307	10,65%	52.934	10,05%	15,82%
Peugeot	3.186	9,45%	3.764	10,35%	3.681	8,62%	-15,36%	-13,45%	57.099	9,91%	54.768	10,40%	4,26%
Toyota	1.669	4,95%	1.812	4,98%	2.303	5,39%	-7,89%	-27,53%	29.572	5,14%	26.944	5,11%	9,75%
Citroen	1.240	3,68%	1.590	4,37%	1.391	3,26%	-22,01%	-10,86%	21.401	3,72%	20.393	3,87%	4,94%
Honda	818	2,43%	997	2,74%	1.372	3,21%	-17,95%	-40,38%	18.445	3,20%	10.597	2,01%	74,06%
Mercedes Benz	704	2,09%	773	2,13%	1.129	2,64%	0,41%	-32,69%	4.357	0,76%	3.400	0,65%	28,15%
Suzuki	629	1,87%	540	1,49%	718	1,68%	16,48%	-12,40%	8.935	1,55%	9.283	1,76%	-3,75%
Hyundai	257	0,76%	205	0,56%	379	0,89%	25,37%	-32,19%	4.780	0,83%	1.978	0,38%	141,66%
Iveco	243	0,72%	242	0,67%	361	0,85%	0,41%	-32,69%	4.357	0,76%	3.400	0,65%	28,15%
Nissan	242	0,72%	181	0,50%	324	0,76%	33,70%	-25,31%	6.106	1,06%	3.094	0,59%	97,35%
Kia	192	0,57%	121	0,33%	412	0,96%	58,68%	-53,40%	3.584	0,62%	1.747	0,33%	105,15%
Audi	133	0,39%	141	0,39%	253	0,59%	-5,67%	-47,43%	3.208	0,56%	2.656	0,50%	20,78%
Scania	90	0,27%	154	0,42%	121	0,28%	-41,56%	-25,62%	1.581	0,27%	1.547	0,29%	2,20%
BMW	84	0,25%	99	0,27%	169	0,40%	-15,15%	-50,30%	2.701	0,47%	2.219	0,42%	21,72%
Chrysler	70	0,21%	71	0,20%	180	0,42%	-1,41%	-61,11%	1.609	0,28%	986	0,19%	63,18%
Agrale	68	0,20%	38	0,10%	54	0,13%	78,95%	25,93%	623	0,11%	438	0,08%	42,24%
Volvo	67	0,20%	96	0,26%	105	0,25%	-30,21%	-36,19%	1.161	0,20%	829	0,16%	40,05%
Mitsubishi	65	0,19%	91	0,25%	121	0,28%	-28,57%	-46,28%	1.703	0,30%	1.095	0,21%	55,53%
Jeep	58	0,17%	64	0,18%	96	0,22%	-9,38%	-39,58%	1.538	0,27%	1.061	0,20%	44,96%
Dodge	52	0,15%	8	0,02%	33	0,08%	550,00%	57,58%	993	0,17%	411	0,08%	141,61%
Chery	40	0,12%		0,00%	64	0,15%	N/D	-37,50%	297	0,05%		0,00%	N/D
Subaru	35	0,10%	21	0,06%	44	0,10%	66,67%	-20,45%	542	0,09%	387	0,07%	40,05%
Seat	20	0,06%	16	0,04%	50	0,12%	25,00%	-60,00%	446	0,08%	68	0,01%	555,88%
Porsche	10	0,03%	7	0,02%	11	0,03%	42,86%	-9,09%	184	0,03%	109	0,02%	68,81%
Land Rover	8	0,02%	10	0,03%	11	0,03%	-20,00%	-27,27%	198	0,03%	198	0,04%	0,00%
Mini	4	0,01%	17	0,05%	25	0,06%	-76,47%	-84,00%	413	0,07%	364	0,07%	13,46%
Puma de Tat	3	0,01%	11	0,03%	67	0,16%	-72,73%	-95,52%	309	0,05%	182	0,03%	69,78%
Ferrari	1	0,00%		0,00%		0,00%	N/D	N/D	5	0,00%	5	0,00%	0,00%
Alfa Romeo		0,00%	5	0,01%		0,00%	-100,00%	N/D	27	0,00%	64	0,01%	-57,81%
Hummer		0,00%		0,00%		0,00%	N/D	N/D	2	0,00%	7	0,00%	-71,43%
Isuzu		0,00%		0,00%		0,00%	N/D	N/D		0,00%	9	0,00%	-100,00%
Jaguar		0,00%	1	0,00%		0,00%	-100,00%	N/D	2	0,00%	13	0,00%	-84,62%
Lamborghini		0,00%		0,00%		0,00%	N/D	N/D	1	0,00%		0,00%	N/D
Lexus		0,00%		0,00%		0,00%	N/D	N/D		0,00%	1	0,00%	-100,00%
Maserati		0,00%		0,00%		0,00%	N/D	N/D		0,00%	3	0,00%	-100,00%
Total	33.697		36.361		42.715				575.890		526.791		



Patentamientos por Ranking de Automoviles - Mercado Total

Rank.	Modelo	Ranking Por Modelos - Automoviles									
		nov/08 (a)	nov/07 (b)	oct/08 (c)	Var a-b	Var a-c	Ac. 08	Part %	Ac. 07	Part %	Var 08-07
1	Chevrolet CORSA	2.499	2.043	2.528	22,32%	-1,15%	33.643	7,64%	32.265	7,97%	4,27%
2	Volkswagen GOL	2.111	2.369	2.813	-10,89%	-24,96%	40.470	9,19%	38.381	9,48%	5,44%
3	Renault CLIO	1.608	1.048	1.272	53,44%	26,42%	17.448	3,96%	20.047	4,95%	-12,96%
4	Peugeot 207 COMPACT	1.407		1.392	N/D	1,08%	3.292	0,75%		0,00%	N/D
5	Volkswagen SURAN	1.104	972	1.078	13,58%	2,41%	15.363	3,49%	14.438	3,57%	6,41%
6	Ford ECOSPORT	996	1.087	1.493	-8,37%	-33,29%	17.085	3,88%	15.328	3,79%	11,46%
7	Volkswagen GOL TREND	955		1.208	N/D	-20,94%	3.191	0,72%		0,00%	N/D
8	Ford KA	828	924	838	-10,39%	-1,19%	9.404	2,14%	9.517	2,35%	-1,19%
9	Fiat SIENA	791	661	1.209	19,67%	-34,57%	13.474	3,06%	9.352	2,31%	44,08%
10	Ford FIESTA	776	1.180	1.221	-34,24%	-36,45%	13.612	3,09%	16.090	3,97%	-15,40%
11	Volkswagen BORA	722	566	1.088	27,56%	-33,64%	12.337	2,80%	8.612	2,13%	43,25%
12	Peugeot 307	700	1.026	863	-31,77%	-18,89%	15.596	3,54%	15.522	3,83%	0,48%
13	Fiat UNO	682	704	794	-3,13%	-14,11%	11.342	2,58%	10.755	2,66%	5,46%
14	Chevrolet CORSA II	598	677	768	-11,67%	-22,14%	9.069	2,06%	8.993	2,22%	0,85%
15	Fiat PALIO	590	775	792	-23,87%	-25,51%	11.535	2,62%	13.287	3,28%	-13,19%
16	Volkswagen FOX/CROSSFOX	543	640	836	-15,16%	-35,05%	12.526	2,84%	12.734	3,14%	-1,63%
17	Chevrolet ASTRA	537	597	799	-10,05%	-32,79%	10.874	2,47%	9.153	2,26%	18,80%
18	Suzuki FUN	504	452	524	11,50%	-3,82%	6.813	1,55%	8.286	2,05%	-17,78%
19	Citroen C4	462	719	353	-35,74%	30,88%	8.160	1,85%	3.453	0,85%	136,32%
20	Renault KANGOO	440	528	434	-16,67%	1,38%	7.632	1,73%	5.422	1,34%	40,76%
21	Toyota COROLLA	427	419	568	1,91%	-24,82%	7.238	1,64%	6.619	1,63%	9,35%
22	Chevrolet MERIVA	401	524	468	-23,47%	-14,32%	7.245	1,65%	8.713	2,15%	-16,85%
23	Ford FOCUS	377	681	637	-44,64%	-40,82%	9.106	2,07%	9.395	2,32%	-3,08%
24	Fiat PALIO WEEKEND	365	334	444	9,28%	-17,79%	4.030	0,92%	5.619	1,39%	-28,28%
25	Renault MEGANE	349	564	553	-38,12%	-36,89%	10.674	2,42%	12.142	3,00%	-12,09%
26	Fiat PUNTO	345	344	436	0,29%	-20,87%	7.333	1,67%	791	0,20%	827,05%
27	Peugeot 206	344	1.846	532	-81,37%	-35,34%	25.983	5,90%	26.114	6,45%	-0,50%
28	Chevrolet SPARK	329		177	N/D	85,88%	589	0,13%		0,00%	N/D
29	Honda CIVIC	308	229	447	34,50%	-31,10%	5.635	1,28%	3.129	0,77%	80,09%
30	Honda FIT	279	514	542	-45,72%	-48,52%	7.559	1,72%	4.760	1,18%	58,80%
31	Citroen C3	271	301	301	-9,97%	-9,97%	4.404	1,00%	7.349	1,81%	-40,07%
32	Chevrolet CORSA SW	266	326	308	-18,40%	-13,64%	4.807	1,09%	5.419	1,34%	-11,29%
33	Volkswagen GOL COUNTRY	266	228	283	16,67%	-6,01%	3.876	0,88%	5.154	1,27%	-24,80%
34	Volkswagen VENTO	230	320	329	-28,13%	-30,09%	5.159	1,17%	4.737	1,17%	8,91%
35	Renault MEGANE II	218	486	330	-55,14%	-33,94%	5.093	1,16%	6.548	1,62%	-22,22%
36	Fiat IDEA	194	338	251	-42,60%	-22,71%	4.187	0,95%	4.896	1,21%	-14,48%
37	Renault SANDERO	191		201	N/D	-4,98%	4.089	0,93%		0,00%	N/D
38	Renault LOGAN	184	176	278	4,55%	-33,81%	4.600	1,04%	1.649	0,41%	178,96%
39	Volkswagen POLO	172	417	250	-58,75%	-31,20%	3.585	0,81%	5.011	1,24%	-28,46%
40	Ford FOCUS II	169		212	N/D	-20,28%	552	0,13%		0,00%	N/D
41	Nissan TIIDA	141	27	171	422,22%	-17,54%	2.951	0,67%	27	0,01%	10829,63%
42	Chevrolet VECTRA	131	188	215	-30,32%	-39,07%	3.305	0,75%	2.686	0,66%	23,05%
43	Citroen BERLINGO	129	161	172	-19,88%	-25,00%	2.589	0,59%	2.960	0,73%	-12,53%
44	Peugeot PARTNER	120	224	168	-46,43%	-28,57%	2.691	0,61%	3.470	0,86%	-22,45%
45	Renault SCENIC	119	137	91	-13,14%	30,77%	2.237	0,51%	2.777	0,69%	-19,45%
46	Citroen PICASSO	113	170	140	-33,53%	-19,29%	2.313	0,53%	2.603	0,64%	-11,14%
47	Chevrolet ZAFIRA	110	141	136	-21,99%	-19,12%	1.963	0,45%	1.716	0,42%	14,39%
48	Volkswagen GOLF	87	68	115	27,94%	-24,35%	1.838	0,42%	1.526	0,38%	20,45%
49	Audi A4	68	44	119	54,55%	-42,86%	1.018	0,23%	1.019	0,25%	-0,10%
50	Suzuki SWIFT	63	32	112	96,88%	-43,75%	1.081	0,25%	376	0,09%	187,50%
51	Otros	827	1.081	1.451	-23,50%	-43,00%	19.824	4,50%	16.081	3,97%	23,28%
Total		26.446	27.288	32.740			440.420	1	404.921		

Autos - Participacion por Segmento





Patentamientos por Ranking de Livianos y Pesados - Mercado Total

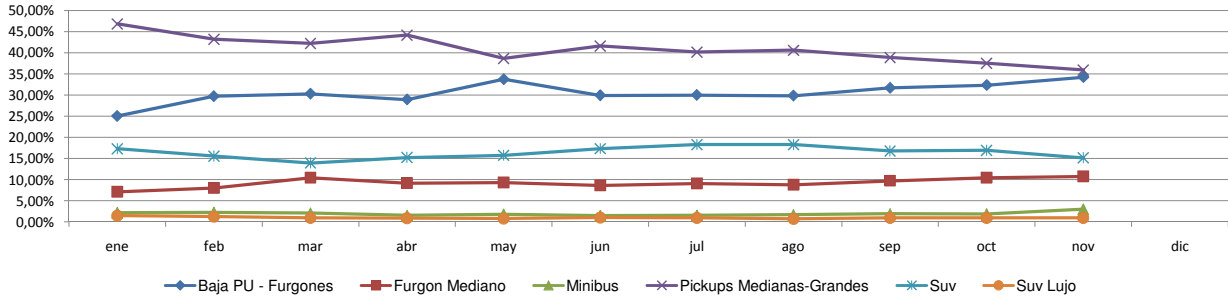
Rank.	Comercial Liviano										
	Modelo	nov/08 (a)	nov/07 (b)	oct/08 (c)	Var a-b	Var a-c	Ac. 08	Part %	Ac. 07	Part %	Var 08-07
1	Toyota HILUX	1.029	1.141	1.437	-9,82%	-28,39%	17.952	15,80%	16.286	16,45%	10,23%
2	Ford RANGER	670	1.314	859	-49,01%	-22,00%	14.334	12,62%	13.745	13,88%	4,29%
3	Renault KANGOO FURGON	583	844	609	-30,92%	-4,27%	11.003	9,68%	10.469	10,57%	5,10%
4	Peugeot PARTNER FURGON	440	475	530	-7,37%	-16,98%	6.847	6,03%	6.676	6,74%	2,56%
5	Fiat FIORINO	378	345	481	9,57%	-21,41%	6.064	5,34%	4.491	4,54%	35,03%
6	Chevrolet S-10	317	671	571	-52,76%	-44,48%	8.601	7,57%	9.192	9,28%	-6,43%
7	Volkswagen SAVEIRO	241	251	323	-3,98%	-25,39%	3.786	3,33%	4.156	4,20%	-8,90%
8	Citroen BERLINGO FURGON	236	215	374	9,77%	-36,90%	3.457	3,04%	3.644	3,68%	-5,13%
9	Renault MASTER	204	206	157	-0,97%	29,94%	2.788	2,45%	2.278	2,30%	22,39%
10	Mercedes Benz SPRINTER	194	193	316	0,52%	-38,61%	3.618	3,18%	2.793	2,82%	29,54%
11	Honda CRV	192	225	333	-14,67%	-42,34%	4.706	4,14%	2.097	2,12%	124,42%
12	Toyota HILUX SW4	114	132	159	-13,64%	-28,30%	2.288	2,01%	2.136	2,16%	7,12%
13	Kia K2700	101	42	146	140,48%	-30,82%	1.053	0,93%	715	0,72%	47,27%
14	Fiat UNO	93	77	84	20,78%	10,71%	1.085	0,96%	1.027	1,04%	5,65%
15	Hyundai TUCSON	77	55	84	40,00%	-8,33%	1.528	1,34%	483	0,49%	216,36%
16	Fiat DUCATO	73	86	57	-15,12%	28,07%	1.066	0,94%	852	0,86%	25,12%
17	Iveco DAILY	62	68	106	-8,82%	-41,51%	1.300	1,14%	1.260	1,27%	3,17%
18	Toyota RAV 4	61	16	70	281,25%	-12,86%	677	0,60%	353	0,36%	91,78%
19	Ford F 100	60	183	102	-67,21%	-41,18%	2.092	1,84%	2.704	2,73%	-22,63%
20	Nissan X-TRAIL	59	31	76	90,32%	-22,37%	815	0,72%	554	0,56%	47,11%
21	Otros	827	860	1.296	-3,84%	-36,19%	18.552	16,33%	13.114	13,24%	41,47%
Total		6.011	7.430	8.170			113.612	1	99.025		

Rank.	Comercial Pesado										
	Modelo	nov/08 (a)	nov/07 (b)	oct/08 (c)	Var a-b	Var a-c	Ac. 08	Part %	Ac. 07	Part %	Var 08-07
1	Iveco 170 E	82	96	113	-14,58%	-27,43%	1.214	5,69%	789	4,31%	53,87%
2	Ford CARGO 1722 E	82	136	94	-39,71%	-12,77%	1.508	7,07%	696	3,81%	116,67%
3	Mercedes Benz L-1624	73	107	108	-31,78%	-32,41%	950	4,45%	1.115	6,10%	-14,80%
4	Mercedes Benz 1315	52	24	56	116,67%	-7,14%	692	3,24%	532	2,91%	30,08%
5	Ford F-4000	49	61	62	-19,67%	-20,97%	964	4,52%	749	4,10%	28,70%
6	Mercedes Benz LS 1634	48	85	76	-43,53%	-36,84%	1.050	4,92%	1.541	8,43%	-31,86%
7	Mercedes Benz ATEGO 1725	47	42	52	11,90%	-9,62%	673	3,16%	151	0,83%	345,70%
8	Volkswagen 17220	45	50	60	-10,00%	-25,00%	887	4,16%	1.007	5,51%	-11,92%
9	Ford CARGO 1517 E	44	31	56	41,94%	-21,43%	322	1,51%	226	1,24%	42,48%
10	Agrale MT12	43	15	34	186,67%	26,47%	314	1,47%	254	1,39%	23,62%
11	Mercedes Benz BMO 384	43		30	N/D	43,33%	186	0,87%		0,00%	N/D
12	Iveco 490 S	33		29	N/D	13,79%	430	2,02%		0,00%	N/D
13	Scania G340	31		52	N/D	-40,38%	376	1,76%		0,00%	N/D
14	Iveco 450 E	28	44	54	-36,36%	-48,15%	713	3,34%	836	4,57%	-14,71%
15	Ford CARGO 1832 E	28	75	39	-62,67%	-28,21%	613	2,87%	405	2,21%	51,36%
16	Renault PREMIUM	27	44	39	-38,64%	-30,77%	381	1,79%	366	2,00%	4,10%
17	Mercedes Benz L1634	27	33	23	-18,18%	17,39%	431	2,02%	690	3,77%	-37,54%
18	Mercedes Benz 710	25	31	37	-19,35%	-32,43%	560	2,63%	523	2,86%	7,07%
19	Mercedes Benz O-500	25	28	22	-10,71%	13,64%	366	1,72%	391	2,14%	-6,39%
20	Mercedes Benz Of 1722	21	27	97	-22,22%	-78,35%	406	1,90%	270	1,48%	50,37%
21	Otros	386	596	672	-35,23%	-42,56%	8.291	38,88%	7.746	42,36%	7,04%
Total		1.239	1.525	1.805			21.327	1	18.287		

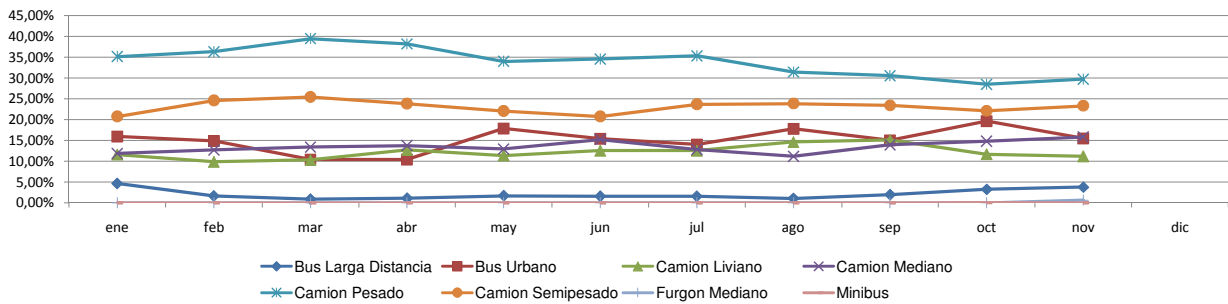


Patentamientos por Ranking de Livianos y Pesados - Mercado Total

Comercial Liviano



Comercial Pesado





28/11/2008

Informe confidencial para uso
exclusivo de los asociados

Patentamientos por Provincias y Tipos -

Distrito	Automovil+Comercial Liviano							Comercial Pesado+Otros Pesados							Mercado Total					
	nov/08 (a)	nov/07 (b)	oct/08 (c)	Var a-b	Var a-c	Ac. 08	Ac. 07	Var 08-07	nov/08 (a)	nov/07 (b)	oct/08 (c)	Var a-b	Var a-c	Ac. 08	Ac. 07	Var 08-07	Ac. 08	Ac. 07	Var 08-07	Part %
CAPITAL FEDERAL	6.522	8.177	7.745	-20,24%	-15,79%	101.885	100.459	1,42%	553	759	758	-27,14%	-27,04%	8.296	9.213	-9,95%	110.181	109.672	0,46%	18,68%
GRAN BUENOS AIRES	5.607	5.750	6.905	-2,49%	-18,80%	89.333	81.056	10,21%	170	177	253	-3,95%	-32,81%	3.249	3.408	-4,67%	92.583	84.464	9,61%	15,69%
BUENOS AIRES	5.137	5.437	6.227	-5,52%	-17,50%	85.730	78.666	8,98%	312	385	382	-18,96%	-18,32%	4.790	4.547	5,34%	90.520	83.216	8,78%	15,34%
CORDOBA	3.172	3.095	4.382	2,49%	-27,61%	58.654	50.162	16,93%	193	297	268	-35,02%	-27,99%	3.518	3.133	12,29%	62.172	53.295	16,66%	10,54%
SANTA FE	2.532	3.053	3.586	-17,07%	-29,39%	50.163	46.406	8,10%	219	277	297	-20,94%	-26,26%	3.638	3.350	8,60%	53.801	49.758	8,13%	9,12%
MENDOZA	1.019	1.081	1.398	-5,74%	-27,11%	20.097	17.745	13,25%	73	110	107	-33,64%	-31,78%	1.481	1.616	-8,35%	21.578	19.361	11,45%	3,66%
ENTRE RIOS	665	684	976	-2,78%	-31,86%	13.387	11.842	13,05%	68	75	93	-9,33%	-26,88%	1.152	1.052	9,51%	14.539	12.894	12,76%	2,46%
CHUBUT	844	828	1.022	1,93%	-17,42%	13.396	11.829	13,25%	70	82	58	-14,63%	20,69%	1.054	1.016	3,74%	14.450	12.845	12,50%	2,45%
NEUQUEN	848	797	957	6,40%	-11,39%	13.270	11.040	20,20%	41	60	64	-31,67%	-35,94%	814	831	-2,05%	14.084	11.871	18,64%	2,39%
TUCUMAN	632	558	797	13,26%	-20,70%	11.060	9.648	14,64%	29	38	65	-23,68%	-55,38%	775	699	10,87%	11.835	10.347	14,38%	2,01%
SALTA	500	580	760	-13,79%	-34,21%	10.644	9.694	9,80%	60	86	68	-30,23%	-11,76%	1.001	1.002	-0,10%	11.645	10.696	8,87%	1,97%
CHACO	725	406	858	78,57%	-15,50%	10.466	7.312	43,13%	39	65	78	-40,00%	-50,00%	907	795	14,09%	11.373	8.107	40,29%	1,93%
CORRIENTES	547	444	594	23,20%	-7,91%	9.506	8.076	17,71%	51	67	89	-23,88%	-42,70%	1.239	1.025	20,88%	10.745	9.101	18,06%	1,82%
SANTA CRUZ	631	625	711	0,96%	-11,25%	9.165	7.570	21,07%	36	46	31	-21,74%	16,13%	483	622	-22,35%	9.648	8.192	17,77%	1,64%
RIO NEGRO	537	547	627	-1,83%	-14,35%	8.348	8.139	2,57%	17	28	10	-39,29%	70,00%	242	290	-16,55%	8.590	8.429	1,91%	1,46%
LA PAMPA	323	333	488	-3,00%	-33,81%	6.563	5.616	16,86%	10	31	35	-67,74%	-71,43%	319	311	2,57%	6.882	5.927	16,11%	1,17%
MISIONES	259	328	366	-21,04%	-29,23%	6.490	6.860	-5,39%	13	29	22	-55,17%	-40,91%	390	392	-0,51%	6.880	7.252	-5,13%	1,17%
TIERRA DEL FUEGO	504	574	622	-12,20%	-18,97%	6.480	6.406	1,16%	29	12	25	141,67%	16,00%	350	343	2,04%	6.830	6.749	1,20%	1,16%
JUJUY	257	240	311	7,08%	-17,36%	5.420	4.794	13,06%	45	62	45	-27,42%	0,00%	775	899	-13,79%	6.195	5.693	8,82%	1,05%
SAN JUAN	284	281	368	1,07%	-22,83%	5.354	4.573	17,08%	29	28	29	3,57%	0,00%	414	360	15,00%	5.768	4.933	16,93%	0,98%
SANTIAGO DEL ESTERO	228	180	309	26,67%	-26,21%	4.726	4.232	11,67%	26	20	28	30,00%	-7,14%	321	288	11,46%	5.047	4.520	11,66%	0,86%
SAN LUIS	217	273	293	-20,51%	-25,94%	4.007	3.556	12,68%	11	9	7	22,22%	57,14%	130	165	-21,21%	4.137	3.721	11,18%	0,70%
FORMOSA	146	134	243	8,96%	-39,92%	3.766	3.103	21,37%	31	9	8	244,44%	287,50%	199	231	-13,85%	3.965	3.334	18,93%	0,67%
CATAMARCA	202	217	200	-6,91%	1,00%	3.819	3.235	18,05%	6	7	10	-14,29%	-40,00%	124	96	29,17%	3.943	3.331	18,37%	0,67%
LA RIOJA	123	114	165	7,89%	-25,45%	2.468	2.316	6,56%	3	6	1	-50,00%	200,00%	99	66	50,00%	2.567	2.382	7,77%	0,44%



Patentamientos por Provincias y Tipos -

